

THE ONLY ALPINE ROUTE PASS!

JR RAIL PASS FOR CENTRAL JAPAN!!

Easy & Great Deal!

Centering the Alpine Route, you can enjoy a grand tour around Gifu and Nagano area from Nagoya!

Unlimited rides on JR local and limited express trains along the route as well as all transportations of the Alpine Route!

This pass is available for a limited period of time. please confirm the availability with your itinerary before purchasing the pass.

Alpine-Takayama-Matsumoto Area Tourist Pass

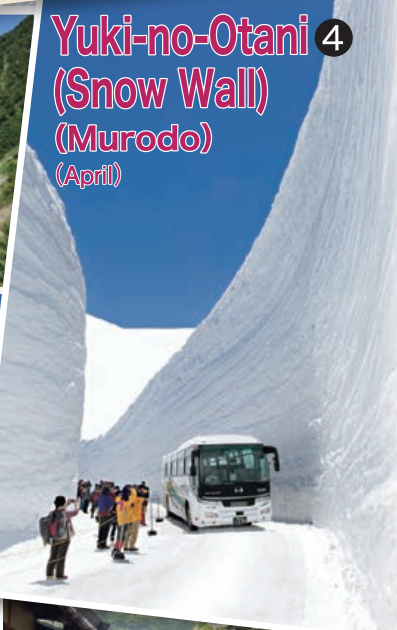
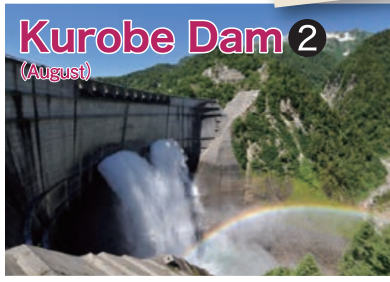
Valid for 5 consecutive days

Adults **¥21,200** Children **¥10,600**

Online / From a travel agent outside Japan / At a station
 Available Period: Mid-April to mid-November Children: 6 to 11 years of age



Alpine Route



• Among the routes that the pass is useable for, the thick blue line represents JR conventional lines, while thick lines of other colors show other useable modes of transport.
 • You can exchange MCO (bought outside of Japan) and purchase passes at designated counters at stations with the ● mark along the route. (You can also exchange MCO and purchase passes at main stations of JR Central: Tokyo, Shinagawa, Shin-Yokohama, Kyoto, Shin-Osaka, etc.)

Where to buy and for more information

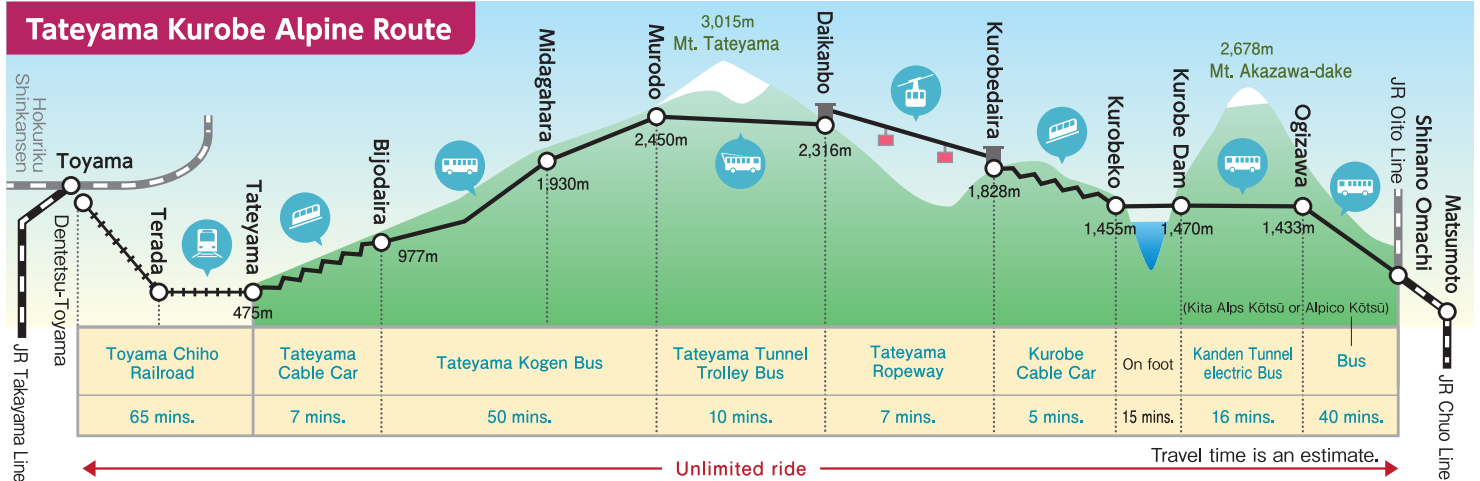
<https://touristpass.jp/en/alpine/>



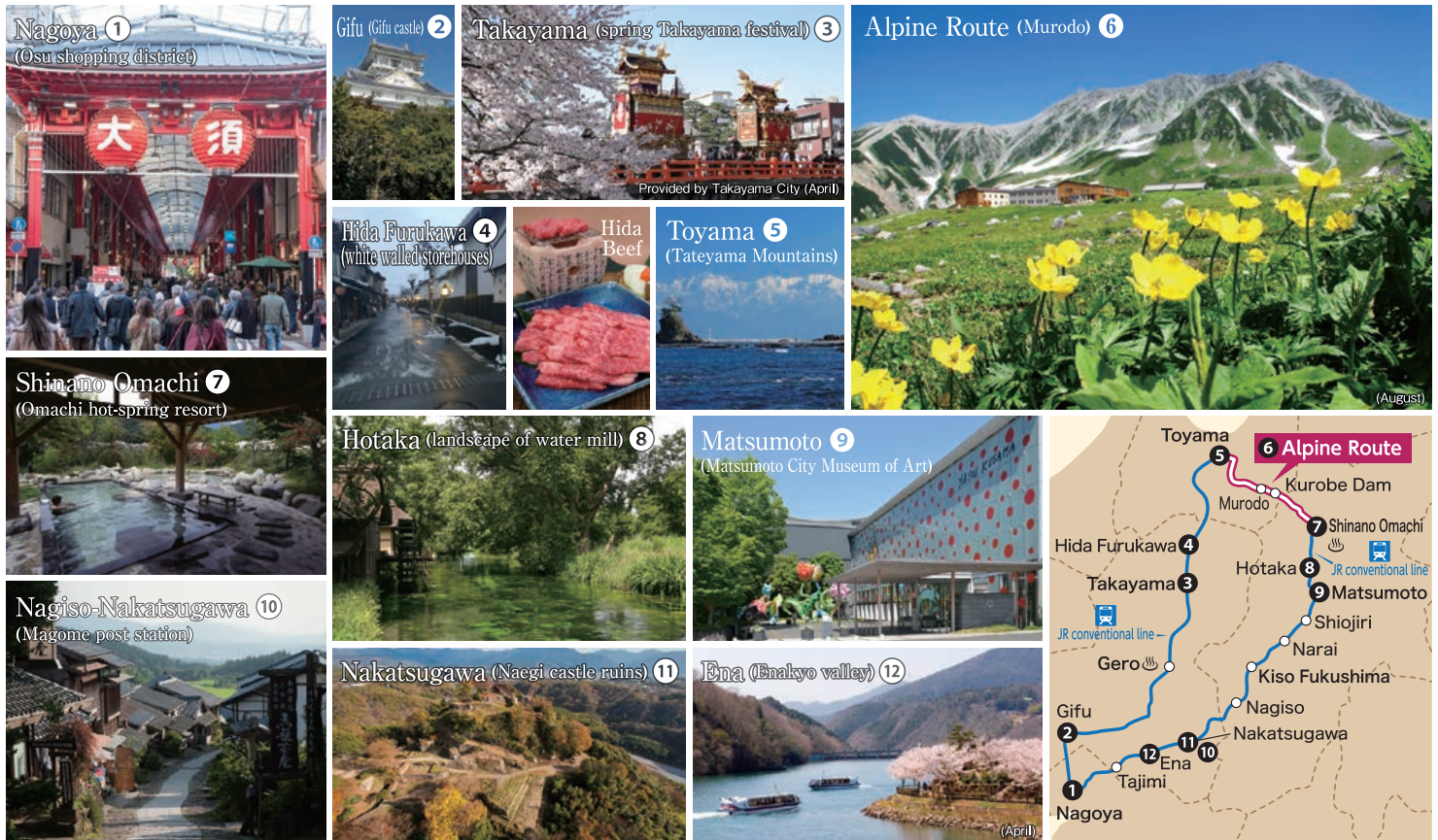
Alpine-Takayama-Matsumoto Area Tourist Pass

Valid for 5 consecutive days Adults ¥18,600 Children ¥9,300

This single pass will allow unlimited rides on the Alpine route and JR conventional lines including limited express trains offering safe, comfortable, fast and prompt service!



• Congestion is expected along the Alpine Route during the Yuki-no-Otani (Snow Wall) season between April and June, and waiting time may be required before using some types of route transportation.
 * When taking any form of transport between Tateyama and Ogizawa, take this ticket to the counter at Tateyama or Ogizawa Station and receive a "boarding pass" to use the transport on that route.
 • Baggage delivery service available between Toyama area and Shinano Omachi area (additional charge required).



A diagram indicating the available JR lines, the Alpine Route and tourist spots. Separate admission and access fees to the attractions shown in the diagram may be required.

✓ Reserved seats on ordinary trains of JR conventional lines are usable up to 4 times!

Each transportation facility may change its holidays and operating hours without notice. Please see the website of each facility for more information.

Examples of travel time (Using JR limited express Using JR non-limited express)

- Nagoya - Gifu : about 20min (JR)
- Gifu - Gero : about 1h 20min (JR)
- Gero - Takayama : about 45min (JR)
- Takayama - Toyama : about 1.5h (JR)
- Shinano Omachi - Matsumoto : about 1h (JR)
- Matsumoto - Narai : about 50min (JR)
- Narai - Kiso Fukushima : about 20min (JR)
- Kiso Fukushima - Nagiso : about 20min (JR)
- Nagiso - Ena : about 50min (JR)
- Ena - Nagoya : about 1h 10min (JR)
- Nagoya - Takayama : about 2.5h (JR)
- Nagoya - Matsumoto : about 2h (JR)

Other JR Tourist Passes

For more information <https://touristpass.jp/en/alpine/>

You are required a passport with a "Temporary Visitor" stamp/sticker given during entry to Japan in order to redeem an MCO (exchange order) for this product purchased outside of Japan, or to purchase this product within Japan. (Please also be aware that the price of the product differs for purchases made outside of Japan and purchases made within Japan.)

